

Jumeirah Islands

JUMEIRAH ISLANDS TOWNHOUSES



AN INTEGRATED COMMUNITY IN THE HEART OF NEW DUBAI

Jumeirah Islands is an integrated residential community boasting a prime location in the heart of New Dubai, with easy access to Sheikh Zayed Road and Al Khail Road. This unique development of four-bedroom townhouses is set in a gated community among lush gardens with a large communal swimming pool. The spacious townhouses provide waterfront views and access to the Jumeirah Islands Pavilion, a waterfront leisure, dining and shopping hub for residents of Jumeirah Islands and the surrounding areas.



DESIGNED TO EMBRACE THE PRINCIPLES OF FAMILY LIVING IN AN URBAN SETTING

Each four-bedroom townhouse has been designed for modern family living, seamlessly blending indoor comfort with outdoor spaces. Every residence offers a double garage, maid's room, study, private garden, veranda, outdoor terrace, roof terrace and en-suite bathrooms. Families will benefit from large living and dining areas. All homes feature premium quality fixtures and fittings throughout, handpicked to complement the modern design of the townhouses.



FOUR-BEDROOM TOWNHOUSE

Each townhouse offers comfortable and tranquil outdoor environments. Relax and unwind in the open spaces of the private garden and veranda at ground level. Take in the surrounding landscape from the outdoor terrace on the first floor and the spacious roof terrace.

Main entrance and living area finishes

- Porcelain floor tiles
- Steps and stairways in stone
- Wooden doors

Bedroom finishes

- Ceramic floor tiles
- Wooden doors
- Built-in wardrobes

Kitchen finishes

- Ceramic floor and wall tiles
- Cabinets with stone countertops

Bathroom/Powder room finishes

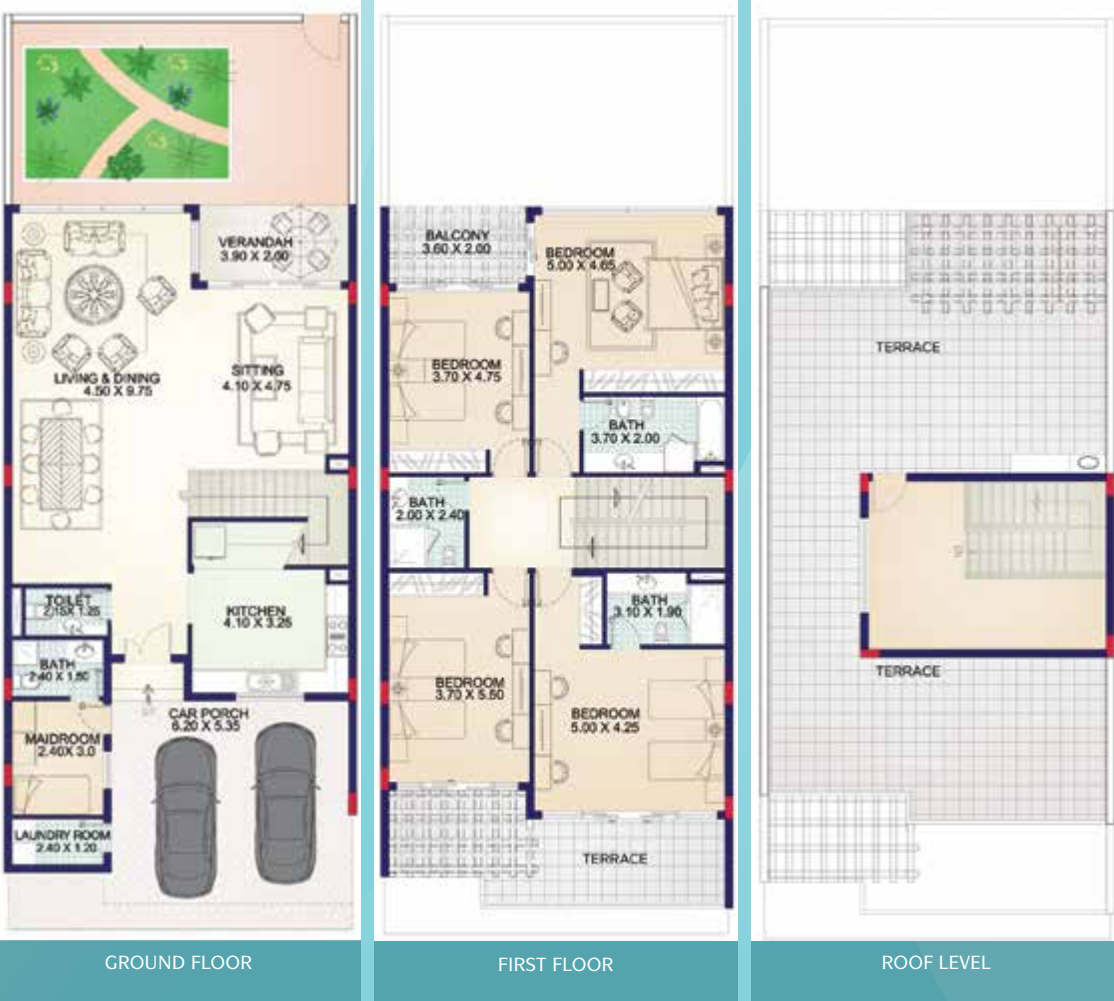
- Ceramic floor and wall tiles
- Modern sanitary ware
- Bathtub and built-in shower in master bedroom
- Built-in shower in other bathrooms
- Modern fixtures and fittings
- Stone countertops





MASTER PLAN

The developer reserves the right to make revisions. All the measurements and drawings are approximate. This information is subject to change without notice. Don't scale drawings. Artistic renderings, landscaping and images are for illustrative purposes only and are subject to change without notice. May 2017.



Floor plan: Numbers, square footage and floor plans are approximate. Final dimensions, square footage and floor plans may vary.





Nakheel Sales Centre / P.O.Box 17777 / Dubai / United Arab Emirates

Tel: +971 4 390 3333 / Fax: +971 4 390 3314

www.nakheel.com